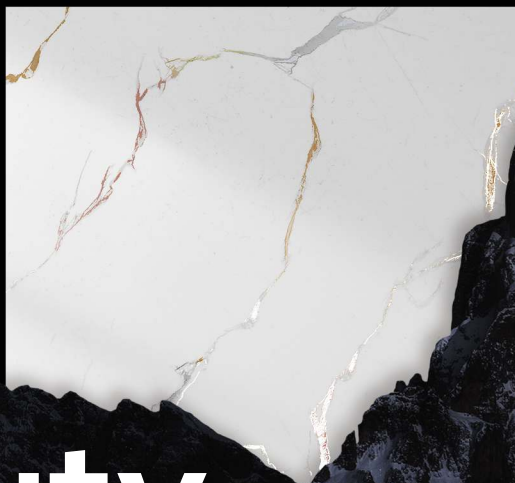




Delivering Your Dreams...

Carving
Collection



Beauty

from earth's heart

600x600mm
New Addition

Multi
Carving

Multi Carving

Shape your space with our one-of-a-kind Multi Carving tiles. Featuring intricate designs hand-carved by artisans, these tiles add unmatched visual intrigue to any wall or floor. Let your imagination run free with endless unique layout possibilities using these tiles that are truly works of art.

600x600mm | New Addition

www.spentagonceramic.com

BUILD your own SUCCESS STORY with Spentagon

#10 Years
Of Excellence

**We are manufacturers and exporters of
porcelain tiles as well as slabs (interior and exterior)**

Everyone wants to walk into a home that is both warm and welcoming, without compromising on style and durability. Spentagon is collection of wood effect floor coverings, all beautifully replicated to give the appearance of natural textures to enhance your home's interior. Drawing inspiration from various wood species finishes, including rustic reclaimed planks to smooth contemporary tiles, Spentagon has a design to suit every room in your home.

12+ SURFACE

100%
WATER PROOF



Multi
Carving

under glazes

Elegance

12+ SURFACE

100%
WATER PROOF



Long Lifespan

if properly installed and maintained, porcelain tiles has the ability to last for decades of recommended use.

Aesthetically Pleasing

We have different colors, shapes, and styles of flooring to help match the aesthetic appeal of our customers.

Hygiene

The surface of ceramic and porcelain tiles does not easily retain antigens or allergens, not do they absorb fumes, odors or smoke.

Less Staining

porcelain tiles is less absorbent, therefore you won't experience any staining in the event of spilled drinks, food, or chemicals.



Fire Resistant

Our tiles are non-combustible and will not burn, melt, or give off toxic fumes when it is exposed to fire.



Water Proof

Our tiles are impervious to liquids. Their colours won't fade even if spills and puddles sit for a long while on your floors or surfaces.



Scratch Resistant

Our tiles are scratch-resistant which means that they will continue to look naturally amazing even after years of heavy traffic.



Impact Resistant

Our tiles have good strength and therefore, can withstand intense force or shock applied at the surface.



Stain Resistant

Because of its low porosity, vitrified tiles do not stain easily. Even coffee, wine, and the muddiest messes cannot deteriorate it.

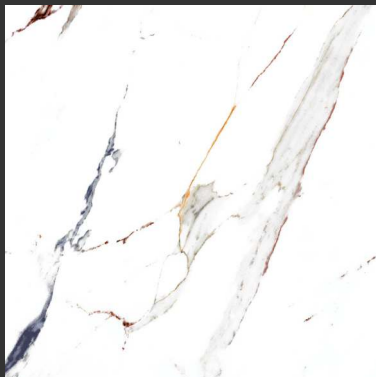


Simpliclean

All tiles are easy to clean with a broom, vacuum, or wet mop. Our tiles are easier to clean and maintain.

Carving
Collection

Multi
Carving



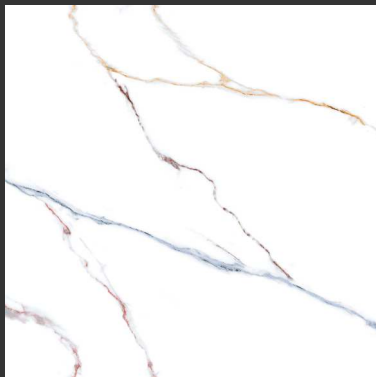
128

Size: **600x600mm**
Finish: **Carving**
Series: **Multi Carving**

www.spentagonceramic.com

12+ SURFACE **100%**
WATER PROOF





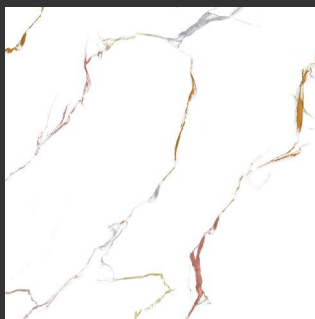
129

Size: **600x600mm**
Finish: **Carving**
Series: **Multi Carving**

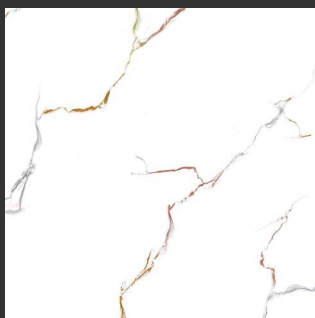


Carving
Collection

Multi
Carving



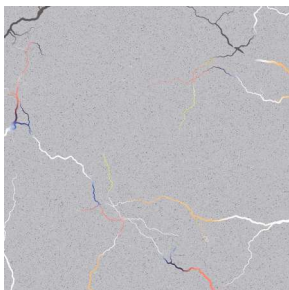
213-A



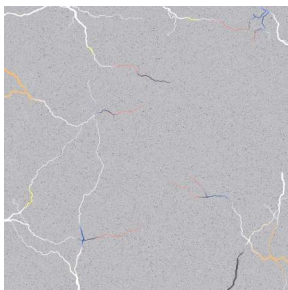
213-B

Size: **600x600mm**
Finish: **Carving**
Series: **Multi Carving**





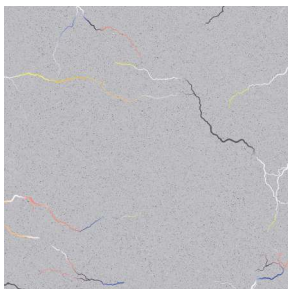
214-A



214-B



214-C



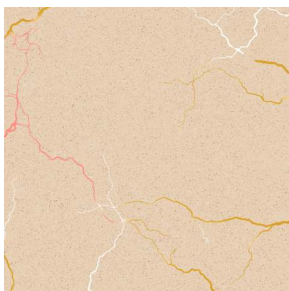
214-D

Size: **600x600mm**
Finish: **Carving**
Series: **Multi Carving**

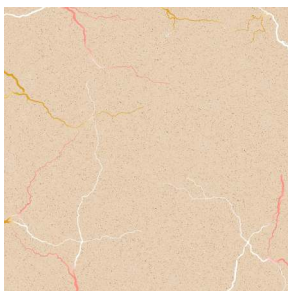


Carving
Collection

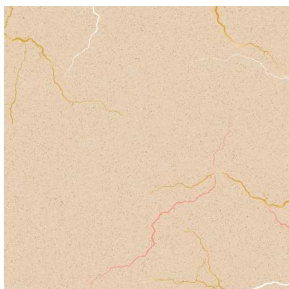
Multi
Carving



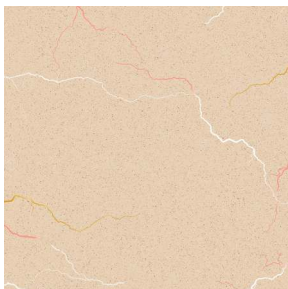
215-A



215-B



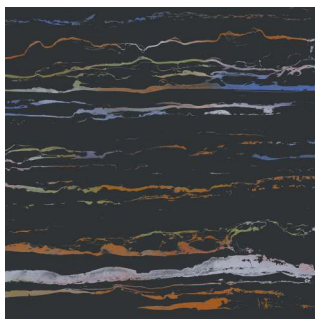
215-C



215-D

Size: **600x600mm**
Finish: **Carving**
Series: **Multi Carving**





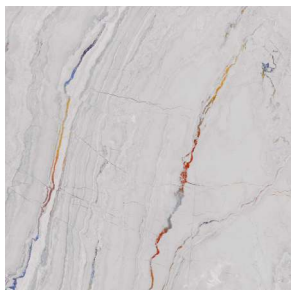
216



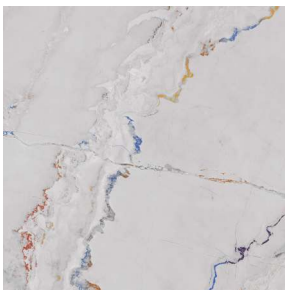
217

Size: **600x600mm**
Finish: **Carving**
Series: **Multi Carving**

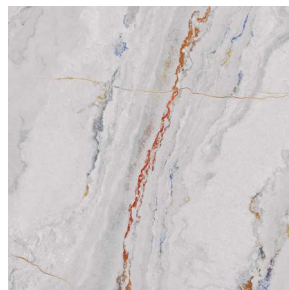




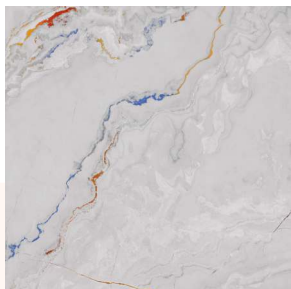
218-A



218-B



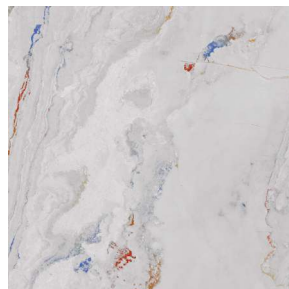
218-C



218-D

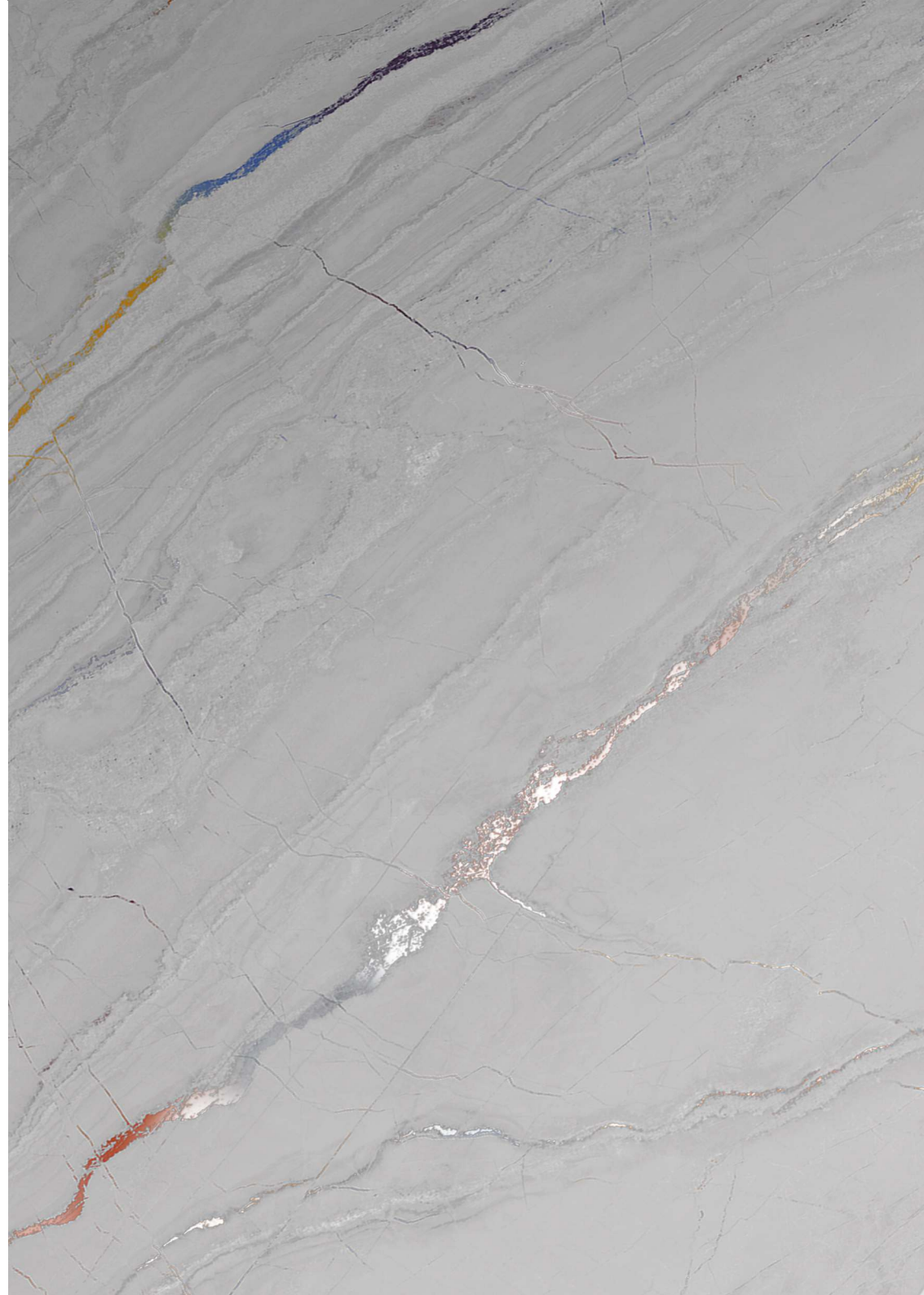


218-E



218-F

Size: **600x600mm**
Finish: **Carving**
Series: **Multi Carving**





219-A



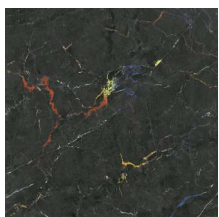
219-B



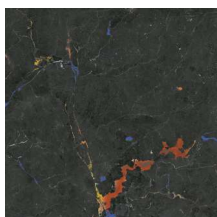
219-C



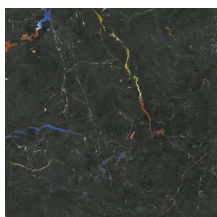
219-D



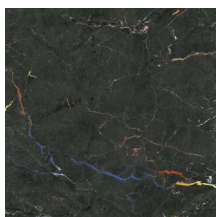
538-A



538-B



538-C



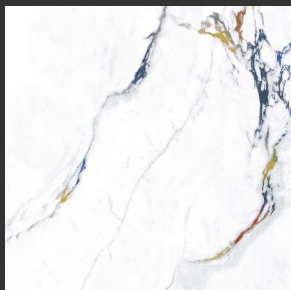
538-D

Size: **600x600mm**
Finish: **Carving**
Series: **Multi Carving**



Carving
Collection

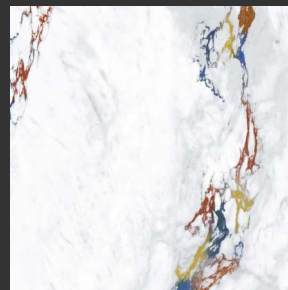
Multi
Carving



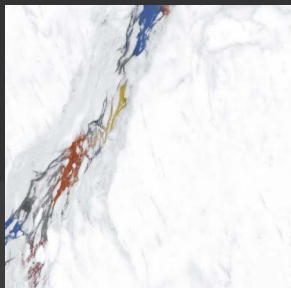
220-A



220-B



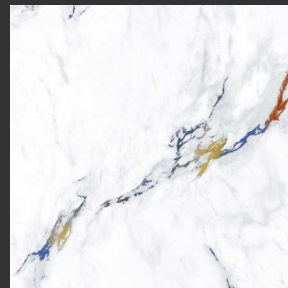
220-C



220-D



220-E



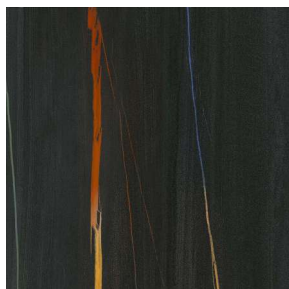
220-F

Size: **600x600mm**
Finish: **Carving**
Series: **Multi Carving**



Carving
Collection

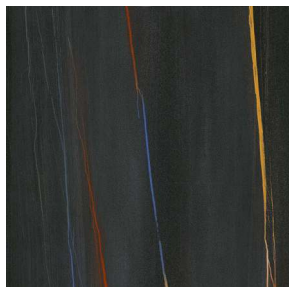
Multi
Carving



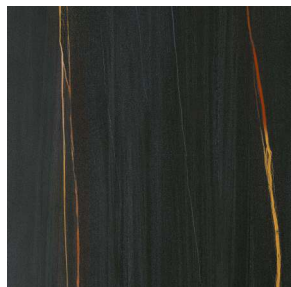
221-A



221-B



221-C



221-D

Size: **600x600mm**
Finish: **Carving**
Series: **Multi Carving**

www.spentagonceramic.com

12+ SURFACE

100%
WATER PROOF





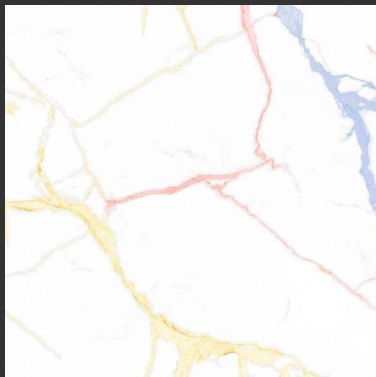
222

Size: **600x600mm**
Finish: **Carving**
Series: **Multi Carving**



Carving
Collection

Multi
Carving



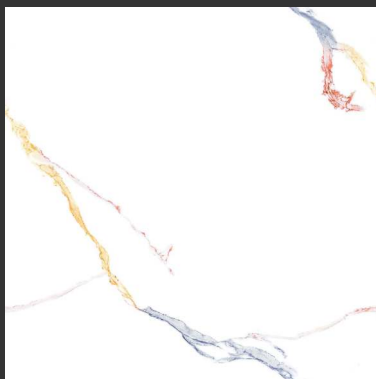
223

Size: **600x600mm**
Finish: **Carving**
Series: **Multi Carving**

www.spentagonceramic.com

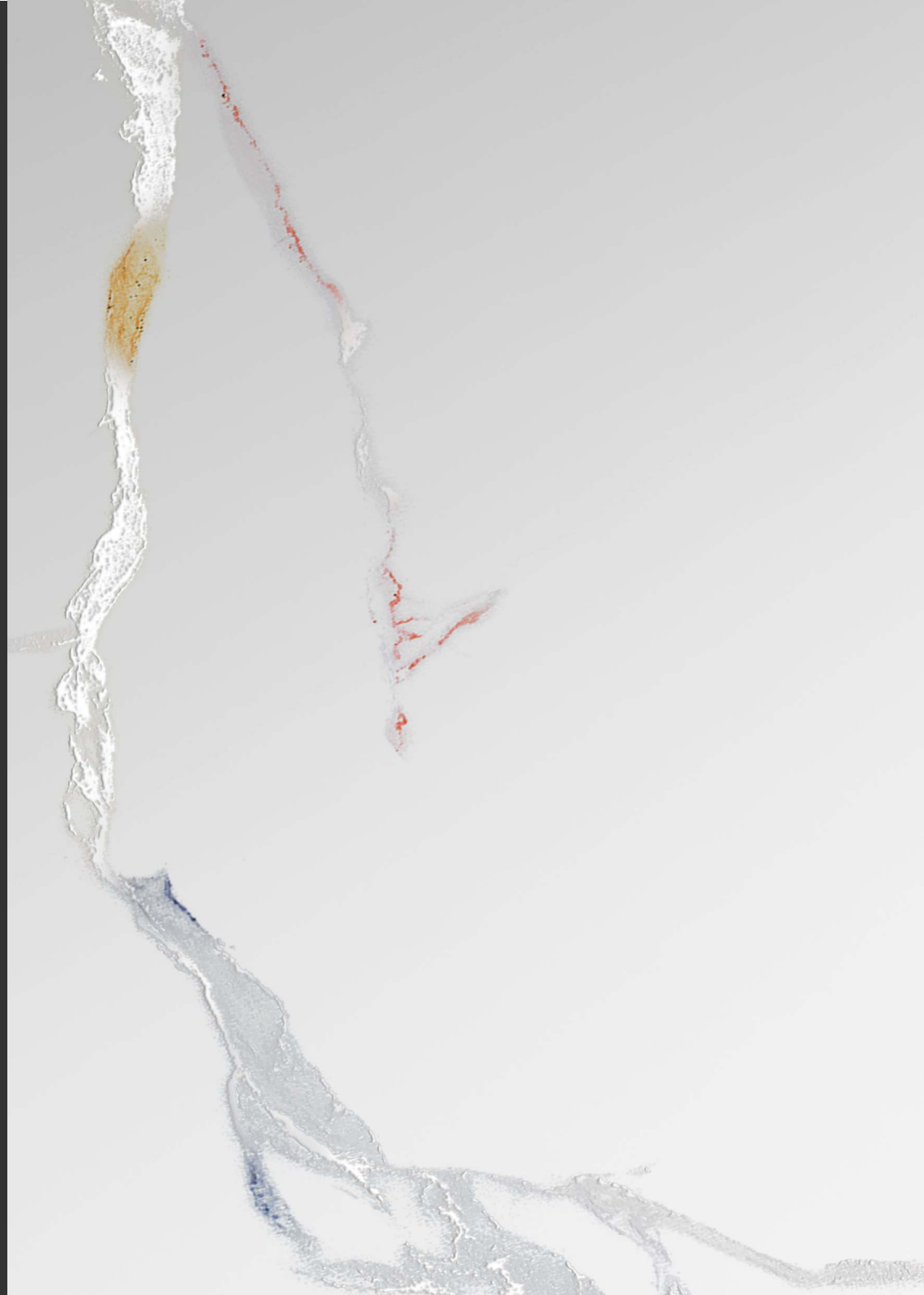
12+ SURFACE 100%
WATER PROOF





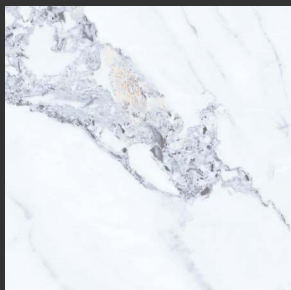
224

Size: **600x600mm**
Finish: **Carving**
Series: **Multi Carving**

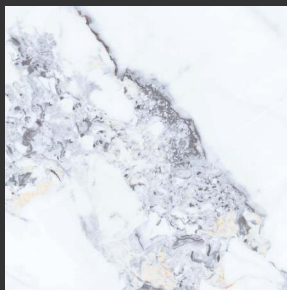


Carving
Collection

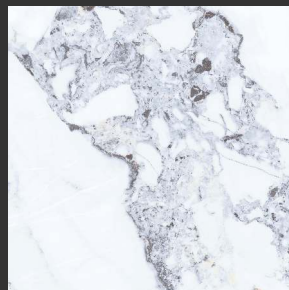
Multi
Carving



233-A



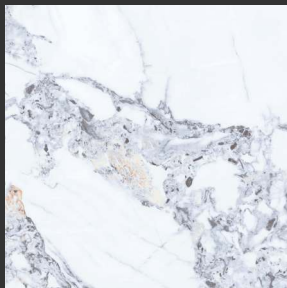
233-B



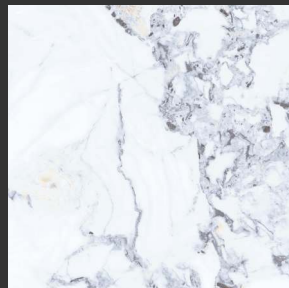
233-C



233-D



233-E



233-F

Size: **600x600mm**
Finish: **Carving**
Series: **Multi Carving**

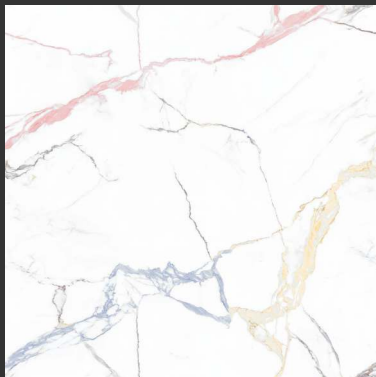
www.spentagonceramic.com

12+ SURFACE 100%
WATER PROOF



Carving
Collection

Multi
Carving



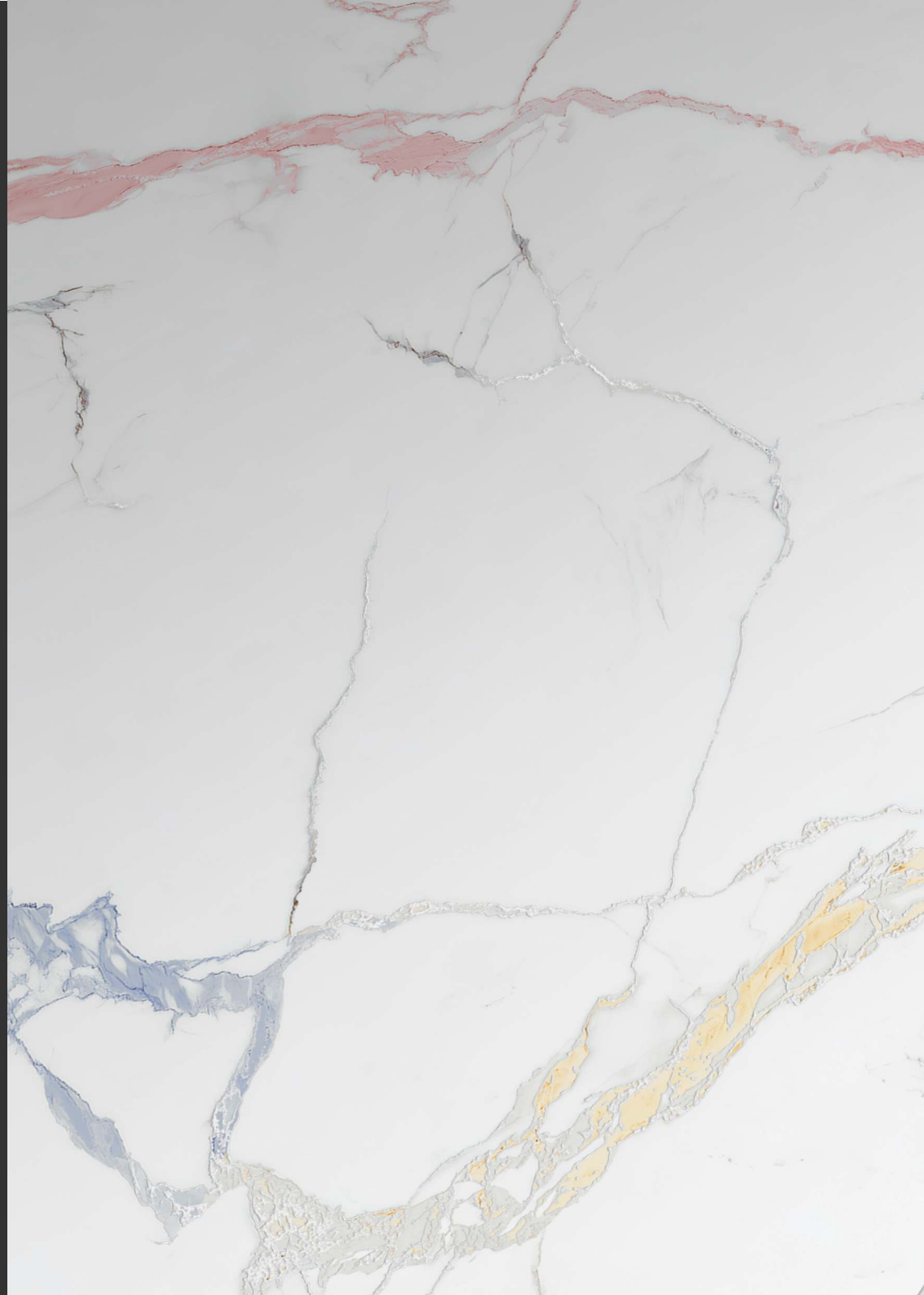
234

Size: **600x600mm**
Finish: **Carving**
Series: **Multi Carving**

www.spentagonceramic.com

12+ SURFACE

100%
WATER PROOF



Carving
Collection

Multi
Carving



235-A



235-B



235-C



235-D

Size: **600x600mm**
Finish: **Carving**
Series: **Multi Carving**





Delivering Your Dreams...

**Jetpar Road, Near Riga Ceramic,
Rangpar, Virat Nagar, Morbi - 363 64**

Call : +91 99786 18005 | +91 87587 77774

E-Mail : info@spentagonceramic.com

www.spentagonceramic.com